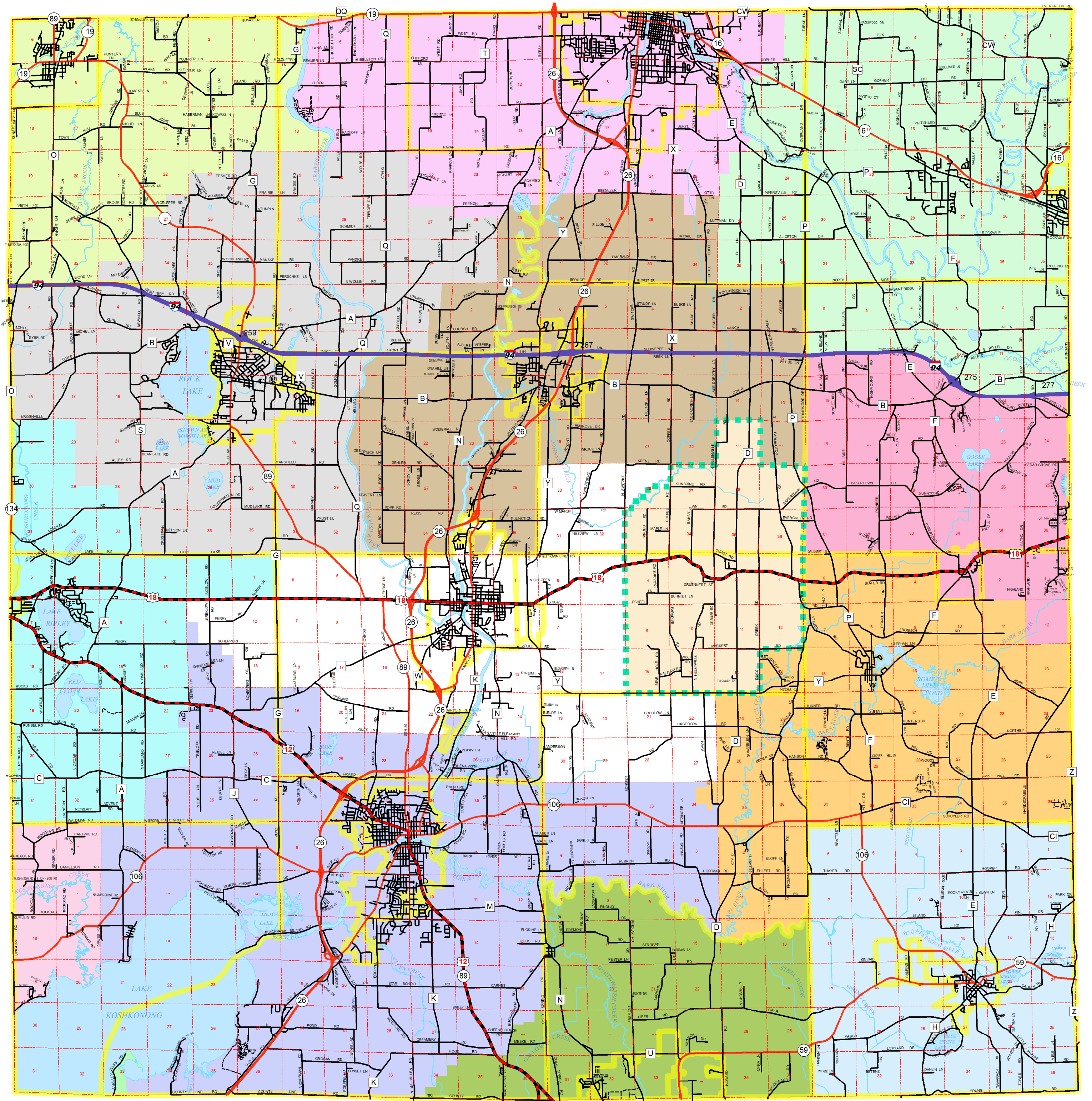




# JEFFERSON COUNTY FIRE DISTRICTS



## Legend

### FIRE DISTRICT

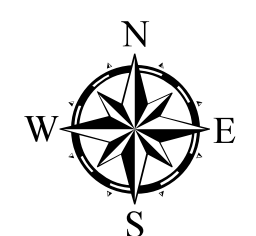
CAMBRIDGE  
EDGERTON  
FORT ATKINSON  
HELENVILLE  
IXONIA

JEFFERSON  
JOHNSON CREEK  
LAKE MILLS  
MILTON  
PALMYRA

ROME  
SULLIVAN  
WATERLOO  
WATERTOWN  
WHITEWATER  
HELENVILLE 1ST RESPONDERS

INTERSTATE HWY  
US HWY  
STATE HWY  
COUNTY HWY  
LOCAL ROAD  
PRIVATE ROAD

Municipal Boundary  
RIVERS & LAKES



1 0.5 0 1 Miles